



Andersonstown

Traditional & Contemporary

Music School

TIN WHISTLE



BEGINNER & PRELIMINARY

UPDATED SEPTEMBER 2013



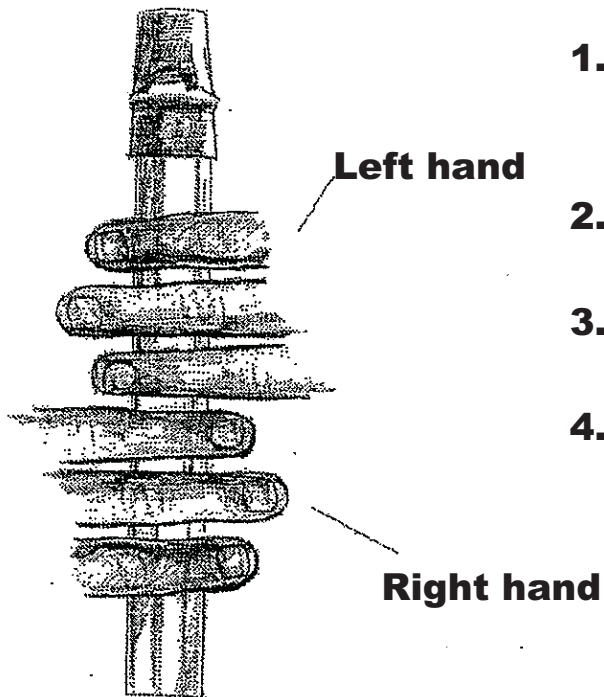
CONTENTS

Preliminary Level Exam Requirements	3
How to Hold the Tin Whistle	4
The 'D' Scale	5
NOTES ON READING MUSIC	6 & 7
Twinkle Twinkle Little Star	8
Mary Had a Little Lamb	8
Eileen Aroon Air	8
South Wind Air	9
Ryans Polka Polka	9
Óró Sé Do Bheatha 'Bhaile Polka	10
Siege of Ennis Polka	10
Roddy McCorley March	11
Fáinne Geal an Lae March	11
The Liltin' Banshee Jig	12
The Spanish Lady Polka	12
I'll Tell Me Ma Street Song	13
Sally Gardens Song Air	13
Going to the Well for Water Slide	14
Spencil Hill March	15
Foggy Dew March	15
Buachill Ón Eirne Air	16
Teir Abhaile Arú Jig	16

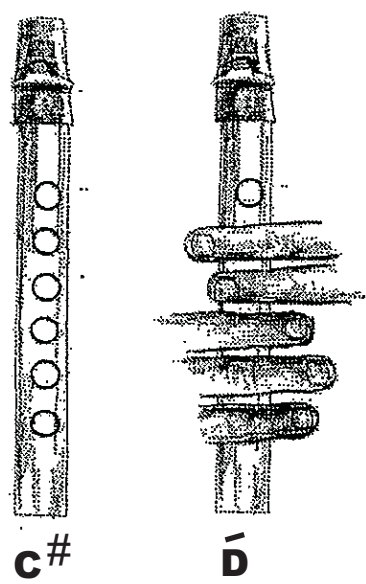
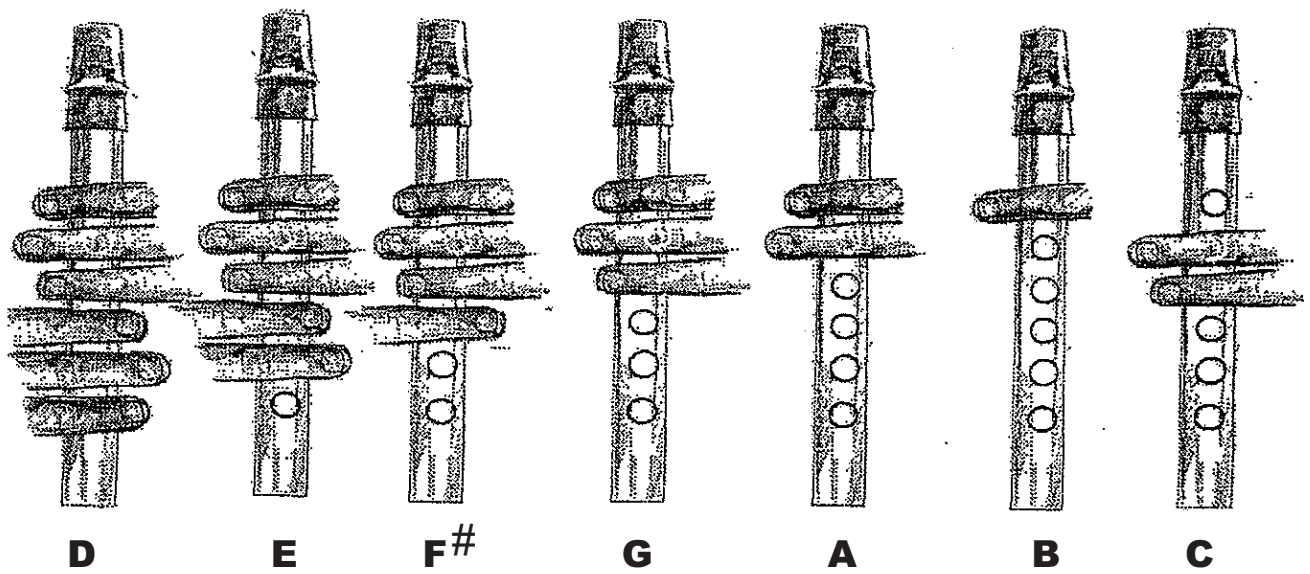
PRELIMINARY EXAM REQUIREMENTS

At preliminary level you will be expected to perform 4 tunes. The tunes should be simple in type - for example, easy marches, airs, polkas etc. No ornamentation or embellishment will be expected at this stage, but points will be given for accuracy, fluency, phrasing and style.

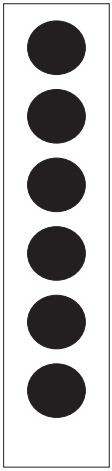
All tunes must be played from memory. All repeats must be included and the tune should be played twice.



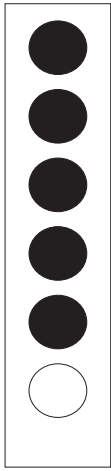
1. **Left hand on top, right hand on bottom**
2. **Make sure to cover all holes**
3. **Blow gently**
4. **For higher notes blow harder**



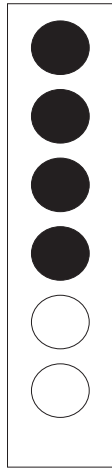
The D Scale



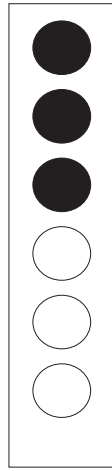
D



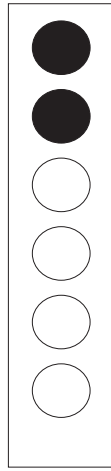
E



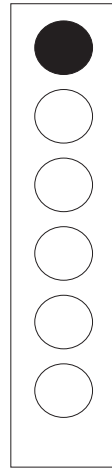
F[#]



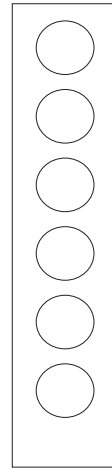
G



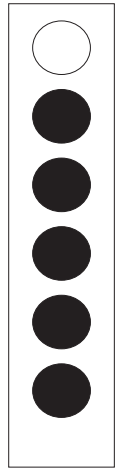
A



B



C[#]



\bar{D}

NOTES ON READING MUSIC

You will see some symbols in this booklet, which are used in music. When you are practising or playing in the class, you should pay attention to the following symbols.

When you see

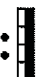


at the start of a tune, it means that the tune is in the key of 'G'. This means that all the 'F' notes in the tune are 'sharp'.

When you see





at the start of a tune, it means that the tune is in the key of 'D'. This means that all the 'F' and 'C' notes in the tune are 'sharp'.

The symbol  means that you repeat that part of the tune.

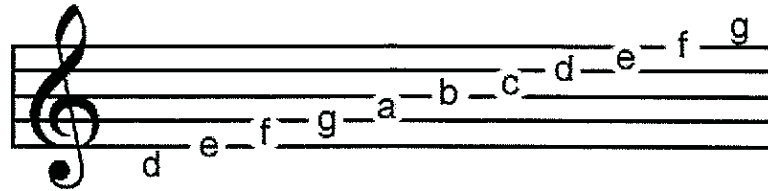
When you see



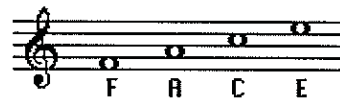
this means that the first time you play that part of the tune you play the section marked 1 and then return to the beginning of that part of the tune. When you repeat that part of the tune, you ignore the section marked 1 and play the section marked 2.

The symbol  or  is called a 'slur'. When you see this, you play the notes as one note.

Below is a diagram of the notes on the staff.



An easy way to remember the notes on the **lines** is with the rhyme **Every Good Boy Deserves Food**.



The notes in the **spaces** spell the word **FACE**.

Twinkle Twinkle Little Star

Musical notation for the first line of 'Twinkle Twinkle Little Star' in G major, 4/4 time. The notes are D, D, A, A, B, B, A, G, G, F, F, E, E, D.

D D A A B B A G G F F E E D

5

Musical notation for the second line of 'Twinkle Twinkle Little Star' in G major, 4/4 time. The notes are A, A, G, G, F, F, E, A, A, G, G, F, F, E.

A A G G F F E A A G G F F E

9

Musical notation for the third line of 'Twinkle Twinkle Little Star' in G major, 4/4 time. The notes are D, D, A, A, B, B, A, G, G, F, F, E, E, D.

D D A A B B A G G F F E E D

Mary Had a Little Lamb

Musical notation for the first line of 'Mary Had a Little Lamb' in G major, 4/4 time. The notes are B, A, G, A, B, B, B, A, A, A, B, B, B.

B A G A B B B A A A B B B

5

Musical notation for the second line of 'Mary Had a Little Lamb' in G major, 4/4 time. The notes are B, A, G, A, B, B, B, G, A, A, B, A, G.

B A G A B B B G A A B A G

Eileen Aroon

Musical notation for the first line of 'Eileen Aroon' in G major, 3/4 time. The notes are D, E, F, G, A, B, D, E, F, G, D, E, F, G, A, B, D, E, F, G.

D E F G A B D E F G D E F G A B D E F G

9

Musical notation for the second line of 'Eileen Aroon' in G major, 3/4 time. The notes are B, B, B, C, E, E, B, B, A, G, E, D, d, C, B, A, G, G, A, B, D, E, F, G.

B B B C E E B B A G E D d C B A G G A B D E F G

Ryan's Polka

Musical notation for the first line of 'Ryan's Polka' in 2/4 time, key of D major. The melody consists of eighth and quarter notes. Below the staff are the following notes: f A B A f A B A d e f e d B A f A B A f A B A d e f e d d

9

Musical notation for the second line of 'Ryan's Polka', starting at measure 9. The melody continues with eighth and quarter notes. Below the staff are the following notes: f a f e e d B A d e f e d B A f a f e e d B A d e f e d d

South Wind

Musical notation for the first line of 'South Wind' in 3/4 time, key of D major. The melody features quarter and eighth notes. Below the staff are the following notes: C B A G B C d A A A C B A G E D E G G G

9

Musical notation for the second line of 'South Wind', starting at measure 9. The melody continues with quarter and eighth notes. Below the staff are the following notes: G d g g g f e d d d C B A G B C d A A

17

Musical notation for the third line of 'South Wind', starting at measure 17. The melody continues with quarter and eighth notes. Below the staff are the following notes: A d g g g f e d d d C B A G E D E G G G

Óró Sé Do Bheatha 'Bhaile

A A G A B A G E G G G A G D E G

5

A A G A B A B d e B d B A A

Siege of Ennis

B B A G E E E D G G F G A B A A d

5

B B A G E E D d d B A G G

9

B G A G B G A G B d d B A G A

13

B G A G B G A G B d d B A G G

Roddy McCorley

Musical notation for the first line of Roddy McCorley, featuring a treble clef, a key signature of one sharp (F#), and a 4/4 time signature. The melody consists of eighth and quarter notes. Below the staff are the following notes: G A B A B D D B A G D E G G A G B C d d d B d

6

Musical notation for the second line of Roddy McCorley, starting at measure 6. The melody continues with eighth and quarter notes. Below the staff are the following notes: e e d B A G E C B A B C d d d B d e e d B A

11

Musical notation for the third line of Roddy McCorley, starting at measure 11. The melody concludes with eighth and quarter notes. Below the staff are the following notes: G E C B A G A B A B D D B A G D E G G A G

Fáinne Geal an Lae

Musical notation for the first line of Fáinne Geal an Lae, featuring a treble clef, a key signature of two sharps (F# and C#), and a 4/4 time signature. The melody consists of eighth and quarter notes. Below the staff are the following notes: D E F F F E F A A B A F D F E D D D A B A B d

6

Musical notation for the second line of Fáinne Geal an Lae, starting at measure 6. The melody continues with eighth and quarter notes. Below the staff are the following notes: F E D F A F d F E A B A B d F E D F

11

Musical notation for the third line of Fáinne Geal an Lae, starting at measure 11. The melody concludes with eighth and quarter notes. Below the staff are the following notes: A F d F E D E F F F E F A A B A F D F E D D D

The Liltin' Banshee



E A A E A A B A B G A B e e e d B d B A G E D



E A A E A A B A B G A B e e e d B d B A A



e a a a g e d B A G A B e e e d B d e f g f g



e a a a g e d B A G A B e e e d B d B A A

The Spanish Lady



F A A B C d d d e f g e f d B A A



F A A B C d d d e f g e f d B A A



f a a f e d d e f a a f e d e



f a a f e d d e f g e f d B A A

I'll Tell Me Ma

Musical staff 1 (measures 1-5) with notes and chord letters: D D G B B C B B B B A A B A G G G D G B B

6

Musical staff 2 (measures 6-11) with notes and chord letters: C B B B B A A B A G G d d d B C C C B B B G

12

Musical staff 3 (measures 12-17) with notes and chord letters: A F E D d d d B C C C B G A F G B G

The Sally Gardens

Musical staff 1 (measures 1-5) with notes and chord letters: D E F E D E F A B A d A B A F E D D D E F E D E F A

6

Musical staff 2 (measures 6-10) with notes and chord letters: B A d A B A F E D D F A d C A B B d C B A F A

11

Musical staff 3 (measures 11-15) with notes and chord letters: B A F A B d e d D E F E D E F A B A d A B A F E D D

Going to the Well for Water

A f A f A f f e d B g B g B g g f e
 3 C d C B C B A C e a f g e C d e d d C B
 5 g e C d e d d e f f e d e e d C
 7 d d C B C C B A G B B G B B F A A F A A
 9 G E E e d C B C d e G E E e d C B C d

Spencil Hill

B B E B B A F D E F A B E D E E B B e e f

6

e d B C d e d C B A A B B e e f

10

e d B C d e d C B A A d C B E B B

14

A F D E F A F E D E E

The Foggy Dew

B d e d B e d B A B D E F G B A G E D E

8

E B d e d B e d B A B D E F G B A G E D E

16

E F G B d C B A A B G A B g f e d B d e

24

e B d e d B e d B A B D E F G B A G E D E

Buachail Ón Eirne

Musical notation for the first piece, *Buachail Ón Eirne*. It consists of three staves of music in treble clef, key of D major (one sharp), and 3/4 time. The notes are accompanied by letter-based tablature below them.

Staff 1 (measures 1-7): B A B A G E D D E G G G D G A B C B A
 Staff 2 (measures 8-14): d d B G B A d d B A G A B C d e d B G
 Staff 3 (measures 15-15): A G A B A B A G E D D E G G G

Téir Abhaile Arú

Musical notation for the second piece, *Téir Abhaile Arú*. It consists of four staves of music in treble clef, key of D major (one sharp), and 6/8 time. The notes are accompanied by letter-based tablature below them.

Staff 1 (measures 1-4): g e e d B g e e d B d d d e d B
 Staff 2 (measures 5-8): e f g a b b a g e f e d e e
 Staff 3 (measures 9-12): e f g a b b e f g a b e
 Staff 4 (measures 13-13): e f g a b b a g e f e d e e